

Lenten Reborn Card User's Manual

(Plus version)

Lenten Technology Co., Ltd.

[Http://www.lenten.com](http://www.lenten.com)

E-mail: sales@lenten.com

Copyright

Copyright © 2004-2007 **Lenten Technology Co., Ltd.** All rights Reserved. Lenten, Lenten logo, and other Lenten marks are owned by **Lenten Technology Co., Ltd.** and registered. All other trademarks are the property of their respective owners. Lenten assumes no responsibility for any errors that may appear in this manual. Information contained here in is subject to change without notice.

Content

Hardware Requirements..... 3

Before Installation: 4

1. First Installation..... 5

2. Express Installation..... 6

3. Keep C Only 10

4. Custom Installation..... 14

 4.1 How to set DISK INFO 16

 4.2 Installing the Operating System..... 20

5. SETTINGS 27

 5.1 Password Setup..... 28

 5.2 Option Menu..... 29

 5.3 DISK INFO 32

 5.4 Tools..... 33

6. How to use SNCOPY 39

 6.1 For Reborn PCI standard version 39

 6.2 For Reborn Card WOL version..... 40

 6.3 SNCOPY LOGIN Menu 42

 6.4 SEND DATA 45

 6.5 SEND COMMAND 46

7. FDISK..... 49

8. UPGRADE 49

9. UNINSTALL..... 50

10. ABOUT 50

11. FAQ(Frequency Asked Questions) 52

12. PLUS SNCOPY & AutoIP Quick Install Guide 53

Hardware Requirements

- 80586 and above IBM compatible PC.
- Minimum 500 MB of free hard disk space with LBA support.
- BIOS must be able to support Hard Disk size over 8.4GB
- 64MB of Memory
- One free PCI slot.
- Color monitor

Operating System Support

- Instant Restore Mode
Support Windows 2000/XP/2003Server/Vista(x32, x64)
- Backup Restore Mode
Support DOS/98/NT/2000/XP/2003Server/Vista(x32, x64), LINUX
- No Restore Mode
Support DOS/98/NT/2000/XP/2003Server/Vista(x32, x64), LINUX

Before Installation:

1. Before installing, please run the SCANDISK and DISK DEFRAGMENTER utilities provided by Windows for best performance. Also disable any anti-virus programs to avoid any possible conflicts. Some anti-virus programs operate much like viruses and may cause conflicts with the Reborn Card. (Making the Reborn Card think there is a boot virus.)
2. Before entering in the Supervisor Mode, install new software, or execute backup function, please make sure it is virus free.

Useful Hotkeys

- | | |
|----------|---|
| (1) U | Enters the "Setup Menu" |
| (2) b +f | Enters Instant Recovery Partition's "Supervisor Mode" |
| (3) f | Enters Instant Recovery Partition's "User Mode" |
| (4) b +B | Executes the partition's "Backup" Function. |
| (5) b +R | Executes the partition's "Restore" Function. |
| (6) b +K | Enters "Keep Mode" and saves the changes temporarily in the next boot when the card is set to Instant Restoration Mode. |

1. First Installation

The Reborn Card Plus version may be installed four different ways.

- 1) **Express Installation:** Supplies an instant restore for **Windows 2000/XP/2003Server/Vista**. All of the original data on the hard disk may be preserved. The default setting of Express Installation is to protect Drive C by instant recovery with every rebooting. Express Installation can only be used when a Windows operating system has been pre-installed on the hard drive.
- 2) **Keep C Only:** By this installation, all the original data (FAT16/FAT 32/NTFS) in drive C may be preserved. All the extended partitions (D, E...) will be destroyed. The remaining free space can be used for further partitioning, if needed.
- 3) **Custom Installation:** Supports multi-boot functions by using the built-in FDISK utility. Up to 48 different operating systems can be installed on the same hard disk, recommended for advanced users. Each partition may be setup with the preferred restore type and restore schedule. When choosing this installation type, all data and partitions will be destroyed and the hard disk will need to be repartitioned and formatted.
- 4) **SNCOPY:** SNCOPY is a built-in feature of the Reborn Card. It enables you to image partitions, install software and to maintain an entire network of computers all at once. This option is only supported by Reborn WOL version or Reborn PCI standard version with supported LAN adaptor. **For Reborn PCI standard version, this option is invisible during first installation. Please refer section [6:How to use SNCOPY](#).**

2. Express Installation

Express Installation can keep the original Operating System **Windows 2000/XP/2003Server/Vista** and all data partitions on the hard drive. Express Installation can only be used when a Windows operating system has been pre-installed on the hard drive.

Note! Before installing, remember to run **SCANDISK** and **DISK DEFRAGMENTER** utilities provided by Windows for best performance. Also disable any anti-virus programs to avoid any possible conflicts.

Express Installation Steps:

- 1) Turn the Power on. Once operating system is up, insert Reborn Card install diskette into the Floppy Drive and Click [Start/Run] and type **A:\install.exe** to install Reborn driver first.

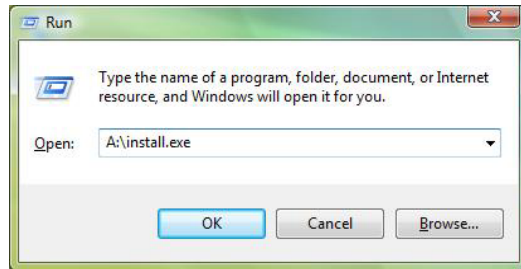


Figure 1

The following two menus will then pop up. Click Install Now to continue and enable the check box of “Install setup driver”. Unblock the file if the firewall stops the installation. Enable the check box of “change Computer Name” and “Change IP Address” if you want to activate the options.

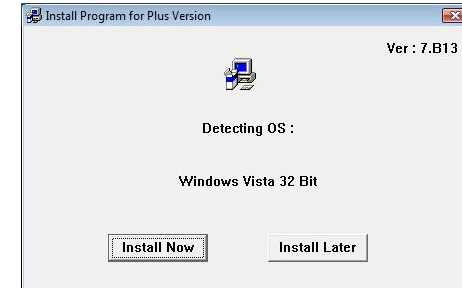


Figure 2

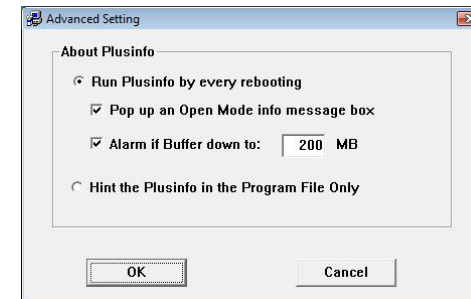
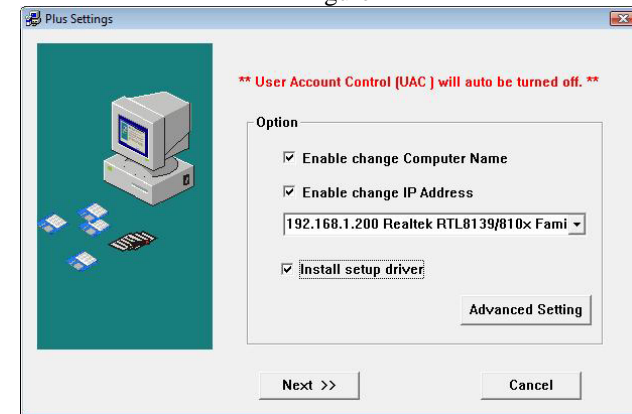


Figure 3

When the Shadow Space (buffer) is less than the predefined size, a warning box will display to remind. Default setting is 200MB.

- 2) Restart the computer to complete the installation.

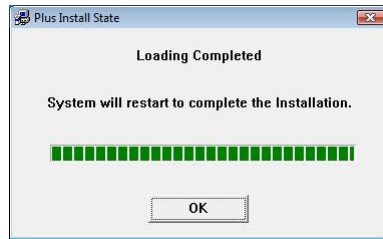


Figure 4

- 3) Turn the Power off to the computer and then open the case. Plug the Reborn Card into a free PCI expansion slot.
- 4) Turn the Power on. As the computer boots, you will see [Lenten Card Hardware version:Vx.x][Press CTRL+H to hardware setup] on the screen. Next the Reborn Card menu with hardware version and hard disk information appears. (Fig. 5) If the hard disk information is correct, insert the Reborn Card install diskette into the floppy drive, then press [F] to continue.
- 5) If the screen does not show as figure 5, please reboot your system and press [Ctrl+H] to go into the Reborn Card hardware settings and change mode.

Hardware Mode: Normal, Mode 1, 2, 3, 4, 5, 6, 7, 8

The different modes are to meet different types of computers once the Reborn Card is not active. **Mode 8** is the **Default** hardware mode.

Hardware Password: Setting Reborn Card hardware Password to avoid unauthorized access and change. The default password is [F] key.

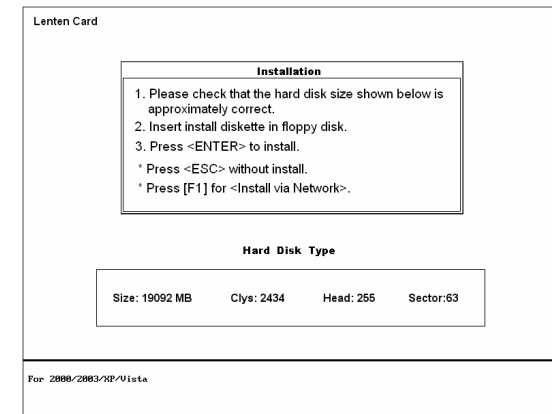


Figure 5

- 6) Next you will see the menu of Install Setup, select [Express] and press [F] to start the install.

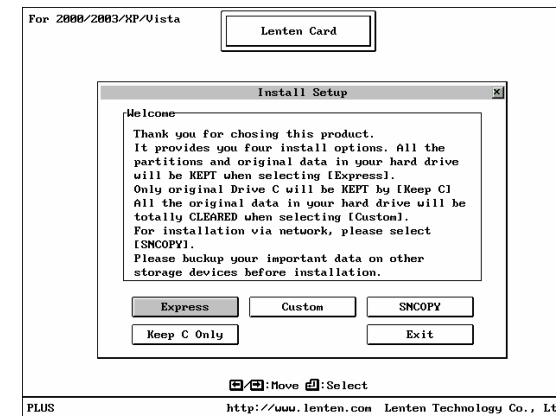


Figure 6

- 7) When [Install completed] shows up, press any key to restart the computer. (Be sure to remove floppy disk)

- 8) Computer should restart with [OS 1] shown on the boot menu. Your computer is now under protection. Press [**Ⓛ** + **f**] to enter Supervisor Mode (Open Mode) or Press [**f**] to enter User Mode (Protection Mode).
- 9) Default Supervisor Password is [**f**] key .

3. Keep C Only

Keep C Only is designed for advanced users who wish to install more than one operating system and data partition on one hard disk and meanwhile wish to keep the pre-installed Operating System. All the original data (FAT16/FAT 32/NTFS) in drive C will be preserved. All the extended partitions (D, E...) will be destroyed. The remaining free space can be used for further partitioning, if needed.

Installation Steps of “Keep C Only”:

1. Turn the Power on. Once operating system is up, insert Reborn Card install diskette into the Floppy Drive and Click [Start\Run] and type A:\install.exe to install Reborn driver first.

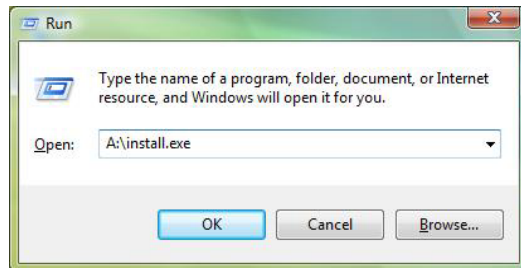


Figure 7

The following two menus will then pop up. Click Install Now

to continue and enable the check box of “Install setup driver”. Unblock the file if the firewall stops the installation. Enable the check box of “change Computer Name” and “Change IP Address” if you want to activate the options.

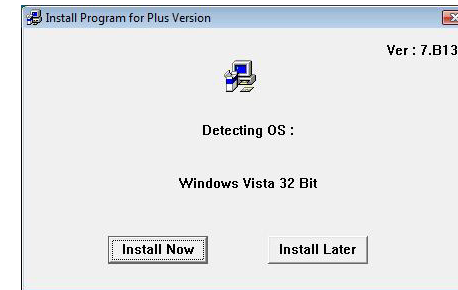
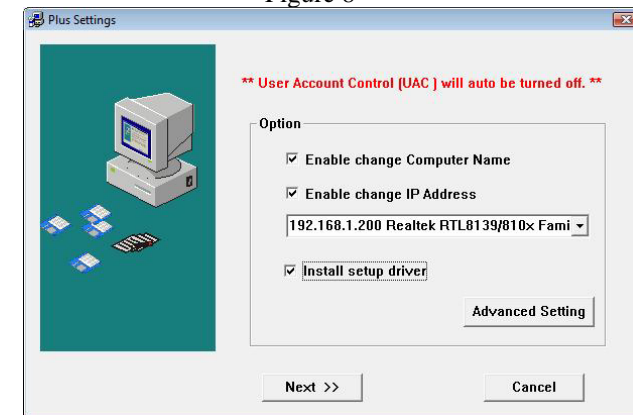


Figure 8



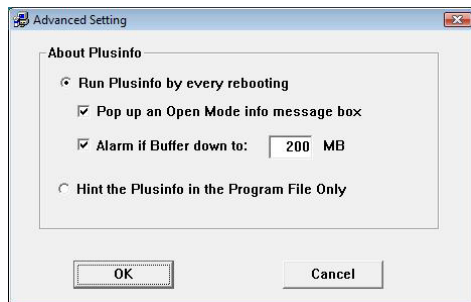


Figure 9

When the Shadow Space (buffer) is less than the predefined size, a warning box will display to remind. Default setting is 200MB.

- Restart the computer to complete the installation.

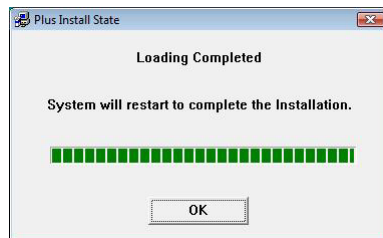


Figure 10

- Turn the Power off the computer and then open the case. Plug the Reborn Card in a free PCI expansion slot.
- Turn the Power on. As the computer boots, you will see [Lenten Card Hardware Version: vx.x] on the screen. Next, the Reborn Card menu with the hardware version and hard disk information appears. If the hard disk information is correct, please insert the Reborn Card install diskette into the Floppy Drive and press [F] to continue.

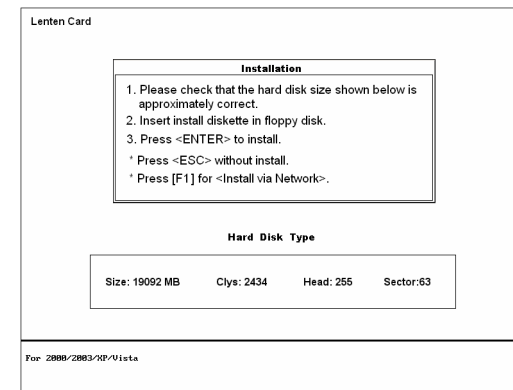


Figure 11

If the hard disk information is incorrect, restart the computer and enter the BIOS to re-configure hard disk size and information.

- After [Reading...] is completed, select [Keep C Only]. (Fig. 12) System will pop up a warning message for you to confirm: [Drive C: will be kept, all other data partitions will be DESTROYED by this process]. Note! By choosing this type of installation, except drive C, all rest partition on your hard disk will be destroyed. Please backup important data first.

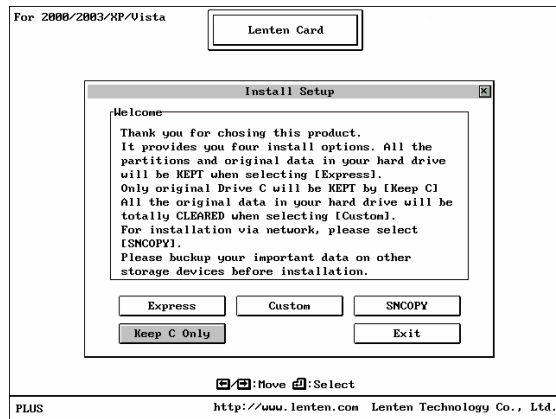


Figure 12

6. Next the system will reboot into DISK setup menu. Please complete hard disk partitioning in this DISK menu, and press [^] key to save and exit. System will then reboot into Reborn Card Boot menu. (Refer Section [4.1: How to set DISK INFO](#))
7. Now, you can start to install Operating System and execute Install.exe in every partition. (Refer Section [4.2: Installing the Operating System](#))

4. Custom Installation

Custom Installation is designed for advanced users who wish to install more than one operating system and data partition on one hard disk. It provides different restoration modes and operating surroundings for flexible use of each workstation.

Custom Installation Steps:

1. Turn the Power off the computer and then open the case. Plug the Reborn Card in a free PCI expansion slot.

2. Turn the Power on. As the computer boots, you will see [**Lenten Card Hardware Version: vx.x**] on the screen. Next, the Reborn Card menu with the hardware version and hard disk information appears. If the hard disk information is correct, please insert the Reborn Card install diskette into the Floppy Drive and press [f] to continue.

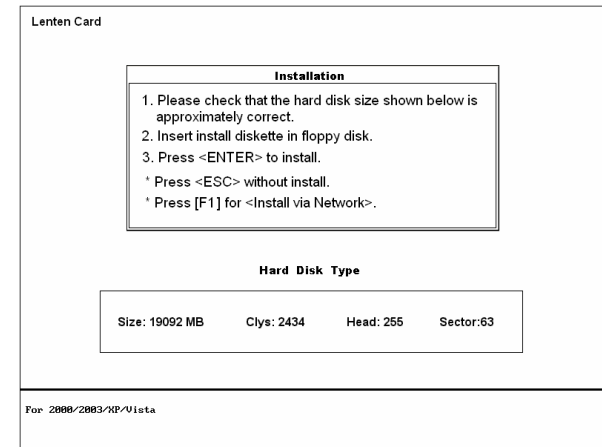


Figure 13

If the hard disk information is incorrect, restart the computer and enter the BIOS to re-configure hard disk size and information.

3. After [**Reading...**] is completed, select [**Custom**]. (Fig. 14) System will pop up a warning message for you to confirm: [All the original data will be removed by [ok] selection. Are you sure?] Press OK to continue. **Note!** By choosing this type of installation, all data and partition on your hard disk will be destroyed. Please backup important data first.

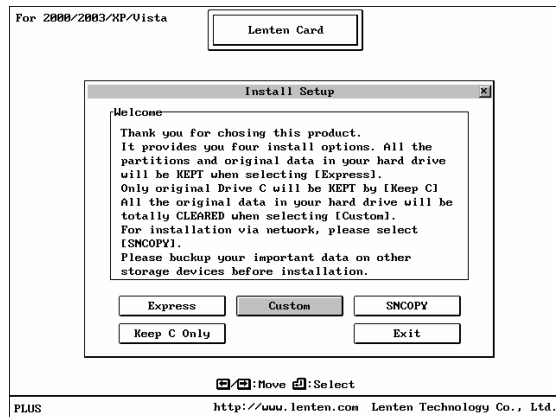


Figure 14

4. Next the system will reboot into DISK setup menu. Please complete hard disk partitioning in this DISK menu, and press [^] key to save and exit. System will then reboot into Reborn Boot menu. (Refer Section 4.1: How to set DISK INFO)
5. Now, you can start to install Operating System and execute Install.exe in every partition. (Refer Section 4.2: Installing the Operating System)

4.1 How to set DISK INFO

The Reborn Card supports multiple operating systems installed on one hard drive when utilizing the <Custom Installation> or <Keep C only> feature. Each operating system is in a different physical partition, allowing multi-booting up to 48 partitions. (Fig. 10)

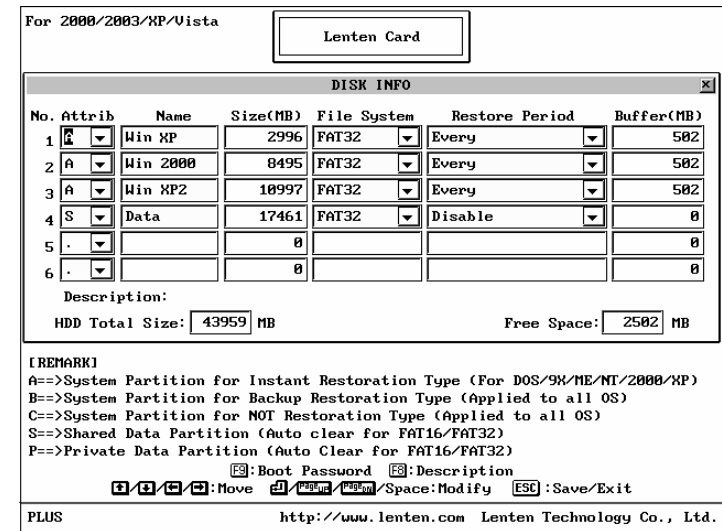


Figure 15

1. Attribution (Partition Type):

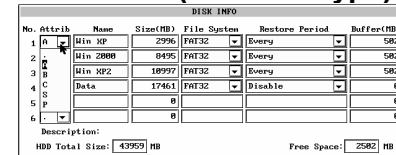


Figure 16

A: System Partition for Instant Restoration:

Within this partition type, all changes will be instantly restored to its original state with a simple reboot. Various restore schedules are provided, including every reboot, daily, weekly, monthly, a given date and manually. Supports Win2000/XP/2003Server/Vista(x32, x64).

B: System Partition for Backup Restoration:

Setup this partition type, you can backup data manually, or restore the original data with preset schedules. Supports almost all operating systems in the market.

C: System Partition for No Restoration:

No protection or backup function is provided for this partition type. Any changes done in this partition are permanent and will remain. Supports almost all operating system in the market. Mainly for networking environments.

S: Shared Data Partition:

This partition type will be visible with every partition you choose to boot from. Excellent for sharing data between different operating systems. (Documents, etc.)

P: Private Data Partition:

This partition type will only be visible for the boot partition with the same name in the setup menu. It will be invisible when booting from any other partitions. This is excellent for constantly changing data that is exclusive to one operating system. (Logs, etc.) For example, if the name of boot partition is [WinXP], then the name of its private data partition must be [WinXP] as well.

2. **Name:** Identify of the partition in Reborn Card boot menu. Maximum length is 10 characters.
3. **Size:** Setup preferred partition size. Enter the preferred size or press [{ / }] to adjust
4. **File System:** Choose appropriate file system for each operating system

No.	Attrib	Name	Size(MB)	File System	Restore Period	Buffer(MB)
1	A	Min XP	2996	FAT32	Disable	582
2	A	Min 2000	8496	FAT32	Every	582
3	A	Min XP2	18997	FAT16	Every	582
4	S	Data	17461	NTFS/HPFS	Disable	0
5	.		0		Manual	0
6	.		0			0

Description: HDD Total Size: 43959 MB Free Space: 2582 MB

Figure 17

FAT32: Support Win98/2000/XP/2003Server/Vista.

FAT16: Support WinNT hard disks under 8.4FG. Total partition size cannot be more than 2000MB.

NTFS/HPFS: Support NT/Win2000/XP/2003Server/Vista. The boot sector of WinNT cannot be located over 2000MB.

Total partition size cannot be more than 4300MB.

LINUX: Support LINUX file system.

LINUX/SW: Support LINUX Swap file system.

5. **Restore Period:** System data recovery

No.	Attrib	Name	Size(MB)	File System	Restore Period	Buffer(MB)
1	A	Min XP	2996	FAT32	Disable	582
2	A	Min 2000	8496	FAT32	Disable	582
3	A	Min XP2	18997	FAT32	Every	582
4	S	Data	17461	FAT32	Daily	0
5	.		0		Weekly	0
6	.		0		Monthly	0

Description: HDD Total Size: 43959 MB Free Space: 2582 MB

Figure 18

Disable: Shuts down Instant Restore function

Every: The system will be instantly restored to its original state with every reboot.

Daily: The system will be instantly restored to its original state at the first boot of every day.

Weekly: The system will be auto restored to its original status at the first boot of every week. (Sunday is the beginning of a new week.)

Monthly: The system will be auto restored to its original state at the first boot of date 1st every month.

Manually: Every access writes to the hard disk will be kept temporarily. The system will be restored to its original status by pressing [b +R] and the restore or supervisor password.

A Given date(1st~31st): The system will be auto restored to its original status at the first boot of a specified date.

Auto-Clear: Data partition will be auto cleared with every boot, daily, weekly, monthly, and manually. Only supports FAT16 and FAT32 file systems.

With System: Private data partition will follow the restore period of its boot partition.

6. **Buffer:**

For Instant Restoration type: Maximum buffer size is 2048MB and Minimum is 50MB. **Default value is 2048MB.** Move the cursor to the selected option and adjust the size by

{ /} .

For Backup Restoration type: it requires a buffer zone that is equal in size to the protected partition. The buffer zone will be automatically reserved within the remaining unpartitioned hard disk space.

For No Restoration type or Data partition: No buffer is required.

7. Other Setup Options:

- 1) **S** : Partition description or remarks.
Describe the partition within 46 characters. Displays on boot menu.



Figure 19

- 2) **t** : Boot Password.
Boot Password setup for system partition. 10 characters are available for Password setting.
[e] Key is the default password.



Figure 20

- 3) **^** : Save/Exit

Note! When the settings in the DISK INFO are saved, the partition size will not be able to change. Please think twice before saving and exiting.

4.2 Installing the Operating System

4.2.1 Boot Menu

After completed DISK INFO setup, press [^] key to save and exit. PC will automatically restart and will show the Reborn Card boot menu as follow. (Fig. 16)

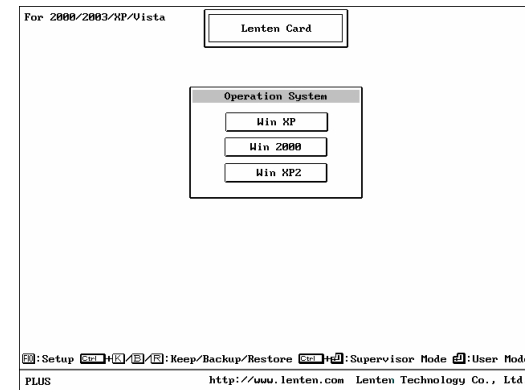


Figure 21

4.2.2 How to enter Supervisor Mode

Press [b +f] in the Reborn Card boot menu to run in Supervisor Mode. The Supervisor Mode is where the Reborn Card is not active and is allowing full Read/Write access to all partitions on the hard disk drive. All of the changes are permanent. This Mode is only accessible from MIS or administrators. The supervisor Password will be required to enter in this mode.

4.2.3 How to enter User Mode:

Press [f] in the Reborn Card boot menu to enter the User Mode. The User Mode is where the Reborn Card is active and is governing the access writes to the partitions on the disk drive. Any changes under this mode will be restored to its original settings after the PC is re-booted by the preset schedule.

Note! The relativity of Supervisor Mode and User mode is only existed when the attribution of boot partition is set to (A): system partition for instant recovery.

4.2.4 How to Install for DOS and Windows

Move the light bar to the selected partition and follow the steps below to start OS installation.

Note! Please prepare a boot CD or Diskette and format all system and data partitions.

4.2.4.1 For boot partition set to attribution (A)

1) Windows Operating System installation steps for <Instant Restoration Partition>:

After rebooting your computer, the Reborn Card boot menu will appear showing all the partitions you setup. At that time you can choose a partition and install the operating System. Follow the steps listed below:

- Step 1.** Start PC with boot diskette or boot CD.
- Step 2.** Select the desired partition with [b +f] and login using the Supervisor Password (default Password is [f] key).
- Step 3.** Format C:
- Step 4.** Start installing desired operating system.

Note! During installation, windows will reboot several times. Make sure all the install procedures are done in the Supervisor Mode.

2) Install Reborn Card Setup Driver in Windows

- Make sure you are still in Supervisor Mode first.
- Step 1.** Insert Reborn Card install diskette in floppy drive.
- Step 2.** Click [Start\Run] and type A:\Install.exe

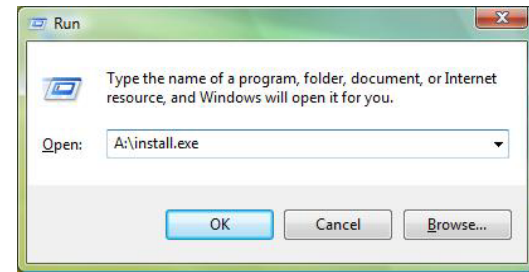


Figure 22

The following two menus will then pop up. Click Install Now to continue and enable the check box of “Install setup driver”. Unblock the file if the firewall stops the installation. Enable the check box of “change Computer Name” and “Change IP Address” if you want to activate the options.

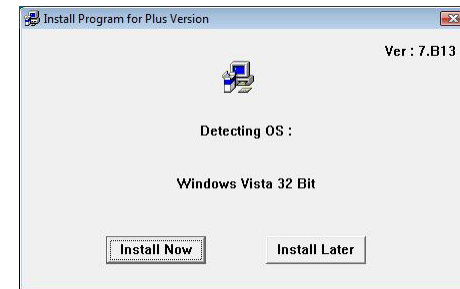


Figure 23

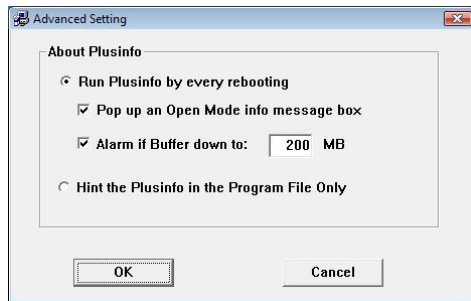
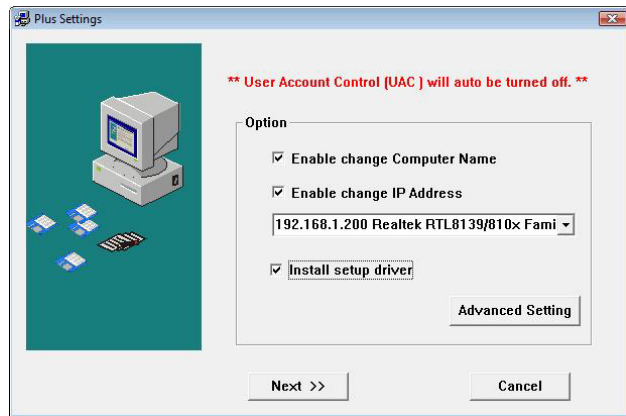


Figure 24

When the Shadow Space (buffer) is less than the predefined size, a warning box will display to remind. Default setting is 200MB.

10) Restart the computer to complete the installation.

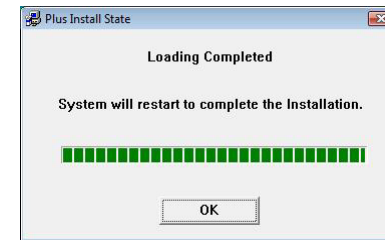


Figure 25

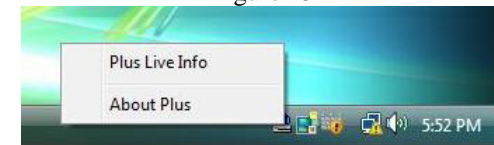


Figure 26

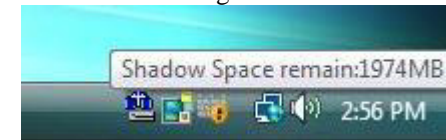
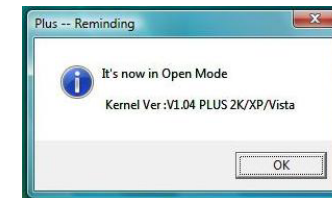
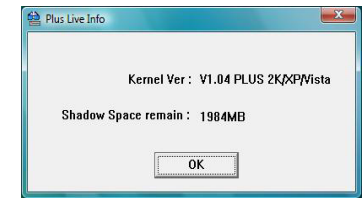


Figure 27

Step 4. When finished, a [Shadow Space] tray icon will display in the Windows taskbar. This “Buffer Monitor” utility installed enables the user to receive status of buffer left for use by the card until a restart operation is needed.



Supervisor Mode



User Mode

Figure 28

Click [Shadow Space] icon in Windows taskbar to see the live message. (Figure 27)

When the buffer gets lower than 200MB, the system will warn you with a beeping sound. Please save all files and restart the computer immediately or operate Restore function to release the new buffer zone.

3) Installing other applications and programs:

To install other applications and programs (Office XP..etc.), please press [b +f] to go into desired partition under Supervisor Mode to begin installation.

4.2.4.2 For Boot partition set to attribution (B)

Operating System installation steps for <Backup Restoration Partition>

Step 1. Start PC with boot disk or boot CD.

Step 2. Select the desired partition with [f] key.

Step 3. Format C:

Step 4. Start installing OS.

Step 5. Reboot computer.

Step 6. Select the same partition again with [b +B] keys and login with Supervisor Password (default Password is Enter) to backup the current partition's data Done

Note! To restore the Backup Restoration partition, please select the partition with [b +R] keys and login with Supervisor Password. It will restore the system to its current backup.

4.2.4.3. For boot partition set to attribution (C)

Attribution C is no Restoration Partition. In this partition, the operating system installing procedure is same as if no card were installed. No protection is provided under this partition.

Step 1. Start PC with boot disk or boot CD.

Step 2. Select this partition with [f] key

Step 3. Format C:

Step 4. Start installing OS.

Step 5. Reboot computer.

Note! For Windows OS in Backup Restoration Partition and No Restoration Partition, please run "Install.exe" from Reborn install diskette to install the Auto-IP utility and other functions if needed.

4.2.5. How to install for a Linux OS

For Linux version before Red Hat v7.0, Linux can only be installed in a partition less than 2000MB. For Linux Red Hat v7.2 and after version, there is no such restriction.

Step 1. Create two partitions for Linux by choosing Custom Installation. One is the Linux file system, and the other is the Linux/SW file system.

Step 2. With the Disk Druid partition program, put the Linux partition under root (/), Mont point), set /dev/hda1 First sector of boot partition and set SWAP to LINUX/SW partition.

Step 3. Start the installation.

5. SETTINGS

In the boot menu, press [u] and login with your Supervisor Password. The Setup menu appears. (See the figure below) All the setting in this menu goes into effect after saving the changes and restarting the computer.

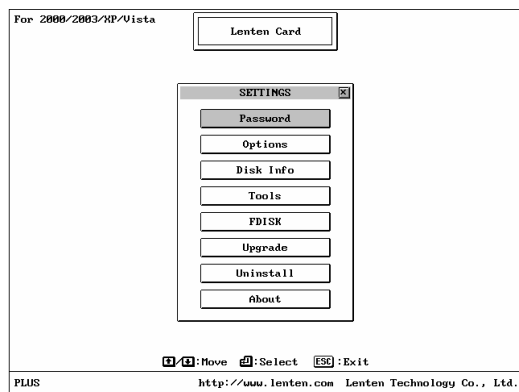


Figure 29

5.1 Password Setup



Figure 30

5.1.1 Supervisor Password

The default Password is [F] key. UP to 10 characters are available. Press F1 can read the password. The supervisor password will be used to enter <Setup Menu>, <Supervisor Mode>, or executing <Backup> and <Restore> functions. Please REMEMBER to write this Password down and NEVER lose it or you will need to reinstall everything!

Note! The “Supervisor Password” can be used for all functions of the Reborn Card. Please remember this when you give someone this password.

5.1.2 Backup Password

Up to 10 characters are available for the backup password. If you need to backup a system partition’s system data (Backup

Restore manually), you will need to enter this Password. (Entering “Supervisor Password” is fine as well).

5.1.3 Restore Password

Up to 10 characters are available for the restore password. If you need to restore a system partition’s system data to the earliest state (Instant Restore manually) or the last backed up state (Backup Restore), you will need to enter this Password. (Entering “Supervisor Password” is fine as well).

5.2 Option Menu

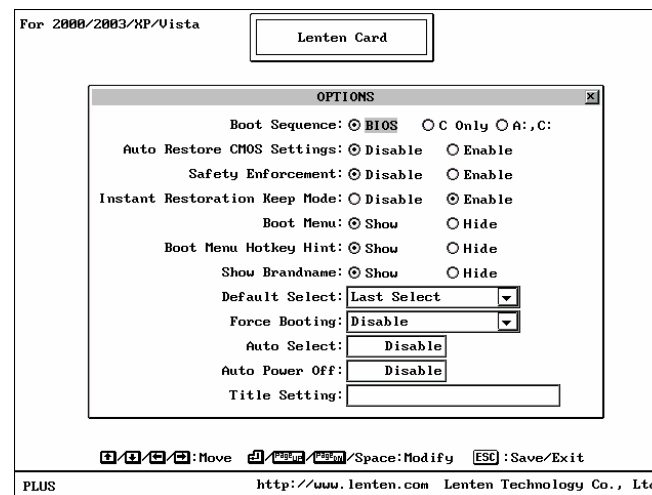


Figure 31

- 1. Boot Sequence: BIOS(default)/C only / A, C**
BIOS: the boot sequence will follow the setting in the BIOS.
C only: Computer boots from C. Enabling this setting will protect

your hard disk information from being destroyed in case the Reborn Card is removed without being uninstalled first. If the card is removed, the system will warn you by beeping and the computer will be unbootable.

A, C: Computer can boot from A or C.

2. **Auto Restore CMOS settings: Disable (default) / Enable**
Disable: Default Value
Enable: If CMOS DATA is modified, it will be restored. Before enabling this option, please enter Tools option and run Analyze/Save CMOS first.
3. **Safety Enforcement: Disable (default) / Enable**
Disable: Default value
Enable: Enhances the security level
Note! Enable this option might lower the compatibility.
4. **Instant Restoration Keep Mode: Enable (Default) / Disable**
Disable: Shuts down Keep mode function
Enable: Enable Keep Mode allows users to save the changes temporarily in the next boot by pressing **Ⓛ +K**. This function can only be used when the restore type is set to Instant Restoration and when restore interval is set to "Every time".
5. **Boot menu: Enable (Default) / Disable**
Show: Show Multi-Boot menu on every start
Hide: Do not show Multi-Boot menu. Note: when this option is selected, system will auto start the OS that you last entered after 4 seconds counting down.
6. **Boot menu hotkey hint: Show (Default) / Hide**
Show: Show hotkeys on boot menu
Hide: Do not show hotkey.
7. **Show brand name: Show (default) / Hide**
Show: Show brand name [Reborn Card] on boot menu
Hide: Do not show brand name.

8. **Default select: Last select (default) / Boot partition name**
Last select: When booting, the light-bar will automatically select the partition that the user last booted from.
Boot Partition Name: Administrator can set the Reborn Card to choose the desired partition at boot.
9. **Force booting: Disable (default) / Boot partition name**
Disable: Do not force select boot partition.
Boot partition name: This function enables the administrator to preset the Reborn Card to boot only from a predetermined partition.
10. **Auto select: Disable (default) / 3~99 seconds**
Disable: Do not auto select boot partition.
3~99 seconds: Count down the predefined seconds, and then automatically boots to the partition that the light-bar is on.

Note 1: This function is normally used in conjunction with "Default select"

Note 2: Anytime during the count down, if any key other than <Enter> is pressed, the countdown will be stopped.

11. **Auto Power off: Disable (default) / 1~60 minutes**
Disable: Do not auto power off computer.
1 to 60 minutes: Setup the idle time of the boot menu. When the boot menu reaches the predetermined time without entering any boot partition, the computer will be shut down automatically.
12. **Title Setting: blank (default)**
Enter the title of this computer within 25 characters.

5.3 DISK INFO

The size setting **CANNOT** be changed after Save and Exit. To change the partition size requires you to use FDISK again in Setup menu. All data in hard disk will be destroyed if FDISK is used. Changing File Systems is also not recommended unless you are installing a new operating system in that partition. All other fields can be changed at will.

Note! Partition set to Instant recovery (A) can still be changed to No recovery (C) anytime. Backup recovery (B) can be changed to any of the recovery mode.
 Instant Recovery (A) -> No Recovery (C)
 Backup Recovery (B) -> Instant Recovery (A) -> No Recovery (C)

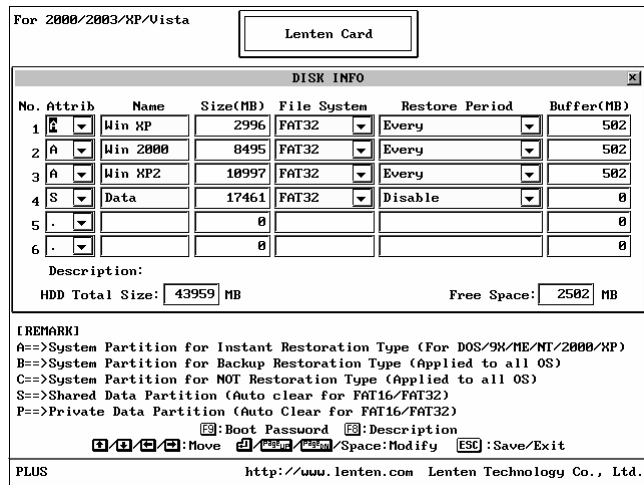


Figure 32

5.4 Tools

There are several advanced utilities, and innovated features (SNCOPY, Hard Disk copy) provided in the tools menu.

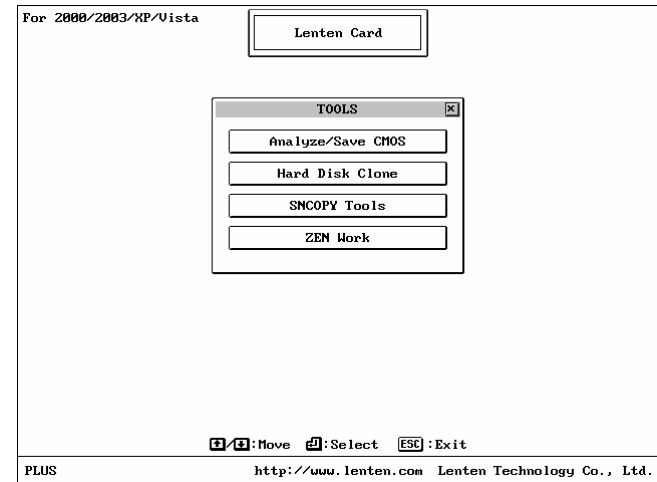


Figure 33

5.4.1 Analyze/Save CMOS data

Make a comparison of current CMOS data and the saved CMOS data in the hard drive for differences. You can run this selection when some settings or peripherals have been changed or replaced. If CMOS data is changed, the Reborn Card will remind you to restore or backup when rebooting, even if you did not run this selection manually.

5.4.2 Hard disk clone (mirror)

When the administrator has thoroughly prepared the hard disk, he/she can use this function to duplicate or mirror hard disks by utilizing IDE cables. Up to seven hard disks can be copied simultaneously. Click [Start] to start copy.

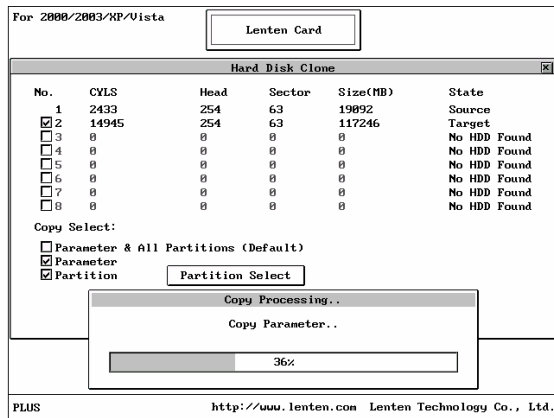


Figure 34

Note! When copying hard disks of different capacity, you can only copy from the small hard disk to the larger hard disk.

1. Parameter & All Partitions (Default)

Enable this check box will copy the entire hard disk data.

2. Parameter

Enable this check box will only copy the Parameter of selected partition. Click [Partition Select] to select at least one partition to start copy.

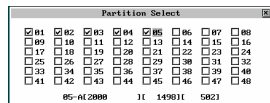


Figure 35

3. Partition

Enable this check box will copy the selected partition data and parameters. Click [Partition Select] to select at least one partition to start copy.

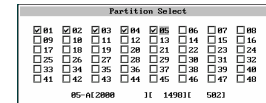


Figure 36

5.4.3 SNCOPY tools (Serverless network copy)

With the Reborn WOL Card, the administrator can take advantage of our Fast Ethernet 10/100mbps feature to manage up to 200 computers at the same time with just a click of a button. All computers must have the Reborn WOL Cards installed. The computers will be controlled by enabled [Auto Standby] for simultaneous maintenance. For detailed operation, please refer to Section 5.4.3.2: SNCOPY Setup.

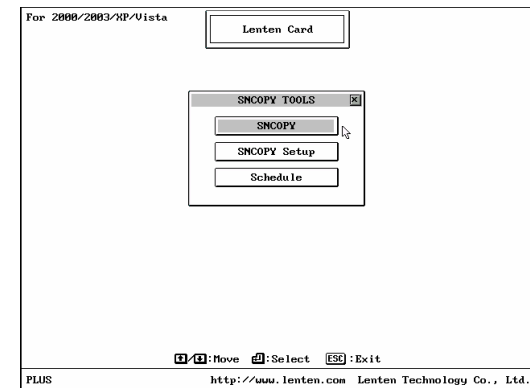


Figure 37

5.4.3.1 SNCOPY

Select SNCOPY, the following figure appears. Please refer section [6: How to use Sncopy](#)

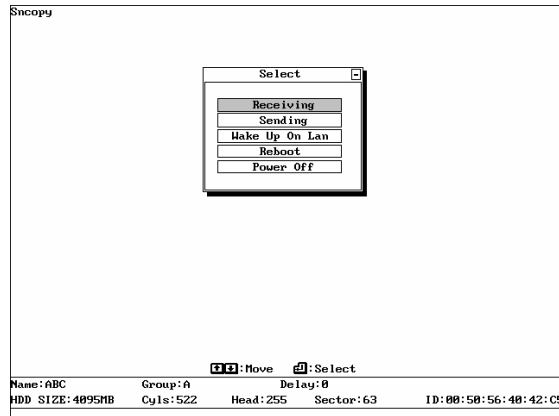


Figure 38

5.4.3.2 SNCOPY Setup

Serverless Network COPY Setup functions:

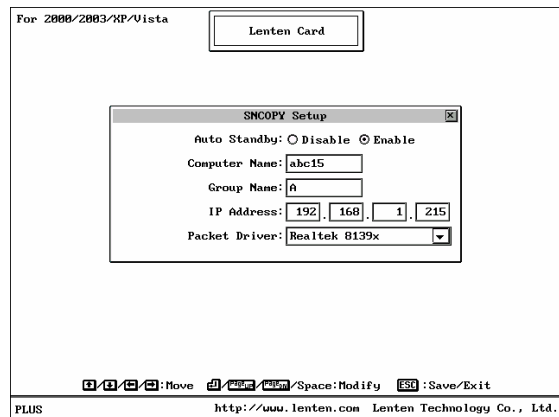


Figure 39

A. Auto Standby: Disable / Enable

Disable : Disable auto connect.

Enable : Reborn Card auto detects the connection and allows card to search for sending or receiving computers when powering on the machine.

B. Computer Name:

Computer Name after SNCOPY. If you leave it blank, the LOGIN NAME will show [?] while running SNCOPY.

C. Group name:

Sncopy Group name used during login. Only computers in this selected group can login. Many groups can be set for separation purposes. (similar to a VLAN)

D. IP: Local IP Address setting

E. Packet Driver: Disable/Realtek 8139x

5.4.3.3 Schedule (WOL Card Only)

1. You can setup schedules to maintain your lab computers during a specific time. Use any computer in your lab as a sending machine and SNCOPY will copy partitions and data parameters from the sending machine to receiving machines at the same time. (**Note: Up to 200 computers can be receiving at one time**)
2. This feature can work with Wake on Alarm in BIOS to auto power on the computer first. After then, by the schedule you set, the sending machine will wake up every computer in the lab and maintain the network automatically. All the computers will automatically power off after mission accomplished.

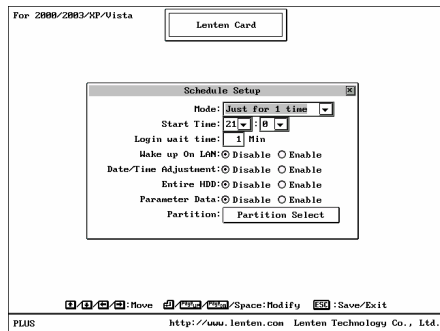


Figure 40

Expression:

Mode	Just for 1 time	Execution Cycle: Disable/Just for 1 time/Daily
Start Time:	0-23/0-59	Setting Execution Hours (0-23), Minutes (0-59)
Login wait time	XX min	SNCOPY response time.
Wake up On LAN	Enable	Wake up On LAN through Network
Date/Time Adjustment	Enable	Reset Date/Time in a lab
Entire HDD	Disable	Send entire HDD data
Parameter Data	Enable	Send Parameter data only
Partition	Partition select	Select desired partition to send

5.4.4 Z.E.N Works

Z.E.N. Works (Zero Effort Net Works) will prompt the computer being boot by Supervisor mode at the specific period of time.

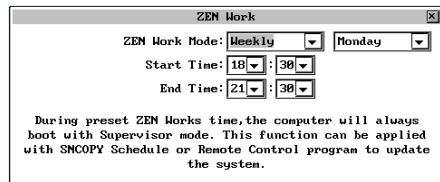


Figure 41

6. How to use SNCOPY

6.1 For Reborn PCI standard version

Please follow the step-by-step guideline to maintain computers over Network.

Step 1. [F10] > [SETUP] > [Upgrade]

For Sending computer, get to Reborn Boot menu, enter [Setup] menu by pressing [F10]. Insert Reborn LAN driver diskette into floppy drive and select [Upgrade] to load the packet driver.

The following list is the supported packet driver.

- Realtek 8139x
- Intel 10/100 PRO #
- 3Com 3C905c
- 3Com 3C905(b)
- 3Com 3C920
- D-Link 500
- D-Link 510TX
- D-Link 530TX-A1, D-Link 530TX-B1
- D-Link 530TX-C
- D-Link 538TX
- D-Link 550TX
- Accton MPX EN1207D-TX
- Accton MPX EN1207F-TX
- VIA Rhine Family 4.26
- VIA 1G(VT612x) V1.11t
- VIA Tahoe Family(2)
- VIA PCI 10/100 V3.27
- VIA VT610B V4.30
- SMC 9432TX
- AdmTek AN983B-NIC
- RE100PD
- DAVICOM DM9X Series
- C83815 v12.2
- IC Plus IP100 v3.03
- MX32PD v2.00
- Realtek 8169
- AMD PCNET v3.10
- B57-NET 1G v1.05

After completed loading packet driver, restart your computer.

Step 2. [F10] > [SETUP] > [Tools] > [SNCOPY tools] > [SNCOPY setup]

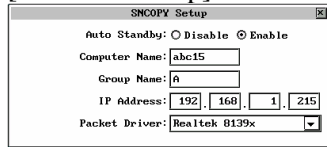


Figure 42

For the sending computer, Get to SNCOPY Setup menu and select the packet driver that match your Network Card. Press ESC to save and exit. See Figure 31.

Step 3. For Sending computer, get to [SNCOPY Tools] and select [SNCOPY]> [Sending], then refer to section 6.3 SNCOPY Login.

Step 4. For receiving computers, get to [SNCOPY Tools] > [SNCOPY] > [Receiving]. Then refer to section 6.3 SNCOPY Login.

6.2 For Reborn Card WOL version

Please follow the step-by-step guideline to maintain computers.

Step 1. For the Sending computer, press [F10] at boot menu, get to [SETUP], [Tools], [SNCOPY tools], [SNCOPY], [Sending].

Step 2. For the Receiving computers, the login menu will auto appear right after you press [Sending] at the sending computer. Refer to section 6.3 SNCOPY Login.

If it is the first time installation for the receiving computers, there are two ways for you to install.



(1) Insert install diskette on every receiving computer and select [SNCOPY] to install through Network. SNCOPY main menu will then appear.

Select <Receiving Computers> to continue.

(2) At every receiving computers, press [F1] at the first install setup menu to download the install parameters from sending computer through Network. Next, you will get into SNCOPY login menu. If you have no floppy drive, this would be a way for you to complete the installation.

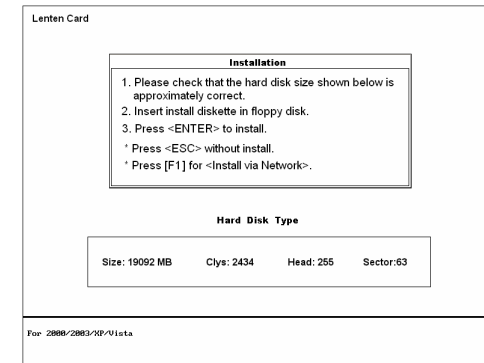


Figure 43

The administrator can run the SNCOPY function to multi-cast to other computers easily. This function supports up to 200 computers simultaneously.

6.3 SNCOPY LOGIN Menu

For Sending computer, press [F10] and get into Setup menu. Go to [SETUP] [TOOLS] [SNCOPY]. The select menu appears. (See figure below)

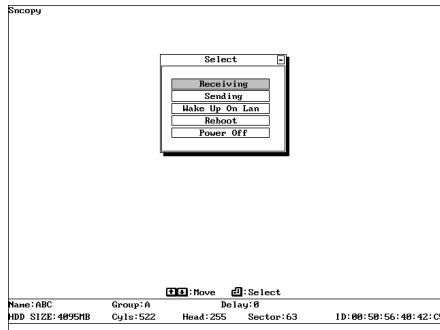


Figure 44

Select Menu Options

1. Receiving:

Target computer for receiving data from Sending Computer.

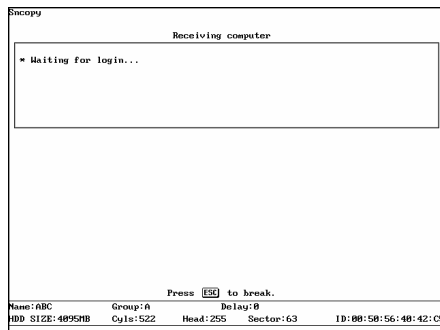


Figure 45

2. Sending:

Source Computer used to send data to receiving computers.

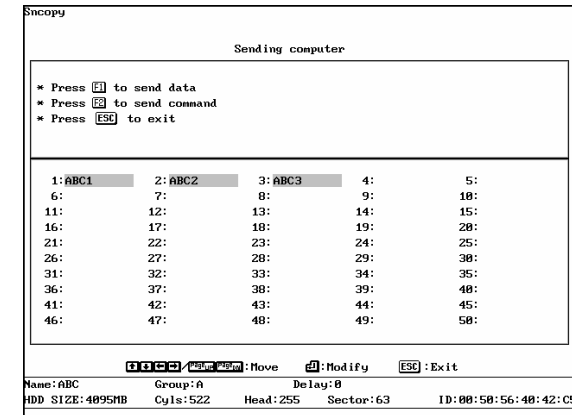


Figure 46

3. Wake up On LAN (WOL):

Used by sending computer to Wake up or turn on receiving computers for maintenance or copying. It can be used with schedules for automatically maintaining networks or labs.

Notes before using Wake up On LAN (WOL) function:

- A. Machine must have ATX style POWER and motherboard.
- B. The motherboard must support with WOL function.
- C. Need to be using WOL Reborn Card, or an Ethernet LAN Card or LAN chipset with WOL.
- D. You must plug the wire connector of the WOL Reborn Card or Ethernet LAN Card into the designated area of the motherboard.
- E. The first time when running this function from Reborn Card, you must run [Sending] [F2] [Collect ID for Wake up On LAN] to record all receiving Ethernet LAN Card ID's to the Sending Computer.

4. Reboot

Restart the sending computer

5. Power off

Power off the sending computer after SNCOPY is complete.

The Login Figure

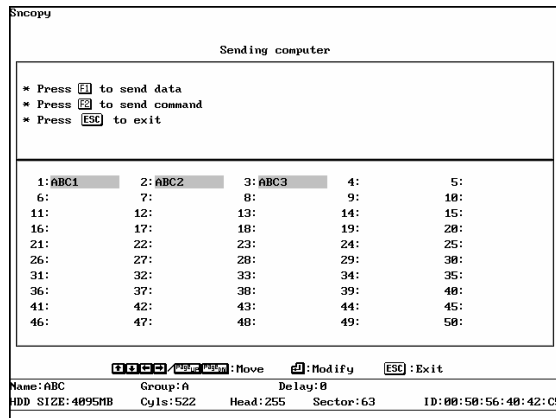


Figure 47

Function Keys

1. **|** : Send Data
Send data, partition, or parameters to Receiving computers.
2. **M**: Send command
Send commands to receiving computers. (i.e. power on/off, date, etc...)
3. **WY Z X { }** : Move
Move light bar to selected function.
4. **^** :EXIT
Exit from SNCOPY function.

6.4 SEND DATA

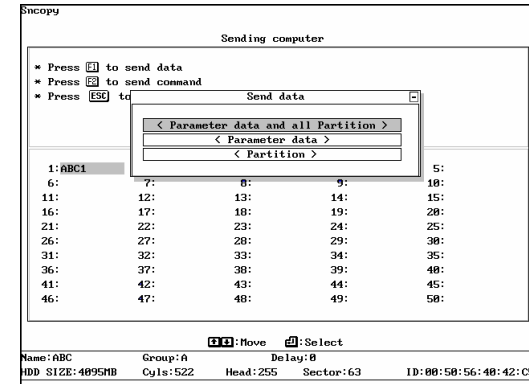


Figure 48

- 6.4.1 **Parameter data and all Partition:**
Copies and sends all data and the Reborn Card information to receiving Computers. Highly recommended for first time installation.
- 6.4.2 **Parameter data:**
Copies only Reborn Card information to receiving computers. Recommend usage: Reborn Card software version upgrades.
- 6.4.3 **Partition:**
Copy selected Partition to receiving computers. Recommended usage: When data of the selected Partition been updated (Time saving). **Time saving feature:** Run Disk Defragmenter before transmitting. Screen will show the disk information while transmitting. Press 「P」 can abort transmitting.

6.5 SEND COMMAND

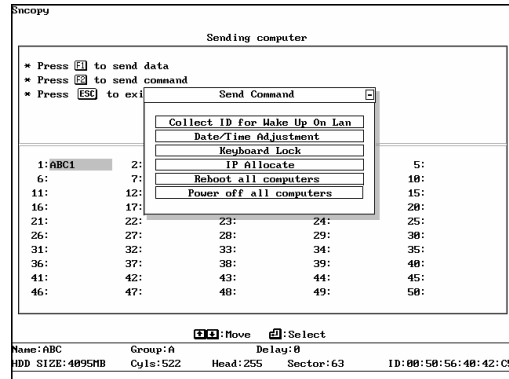


Figure 49

6.5.1 Collect ID for Wake up on LAN:

Record the Ethernet LAN Card ID of standby receiving computers. This function is for the following two purposes:

- (1) Auto IP utility
- (2) Wake up On Lan by remote control

6.5.2 Data/Time adjustment:

Match the receiving computers data and time as the sending computer.

6.5.3 Keyboard Lock:

Lock keyboards of all the receiving computers so nobody can access them during transmission.

6.5.4 IP Allocate

Setup Computer Name, IP Address, and Sncopy Group. The following settings can be setup one by one manually or auto allocated. After completed the following settings, press ^ and select [Complete Setup & Exit] or select [Auto Allocate] to start IP allocating.

A. User ID: Send / Receive

Identify the target and source machine

B. Computer Name: Computer Name after SNCOPY

Setup the sending computer name and the receiving computer name. If setup the Computer Name of the sending computer to be ABC, the receiving computer will be ABC1, ABC2, ABC3...after using [Auto Allocate] option.

C. IP Address:

Setup the IP address of the sending computer and receiving computers. If setup the IP address of the sending computer to be 192.168.1.1, the receiving computer will be 192.168.1.2, 192.168.1.3, 192.168.1.4,... after using [Auto Allocate] option.

D. SNCOPY Group:

Group name used during login. Only computers in this selected group can login. Many groups can be set for separation purposes. If setup the SNCOPY Group to be A, the receiving computer will be in the same group A after using [Auto Allocate] option.

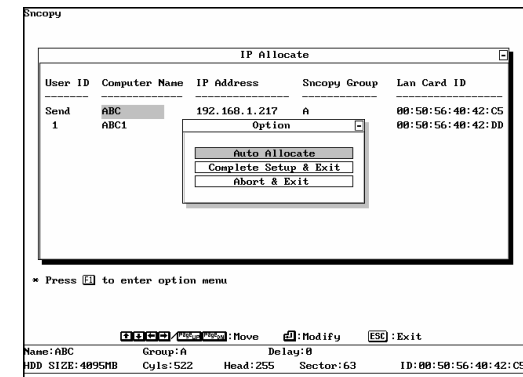


Figure 50

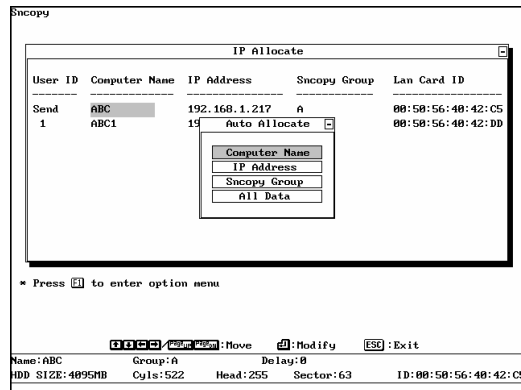


Figure 51

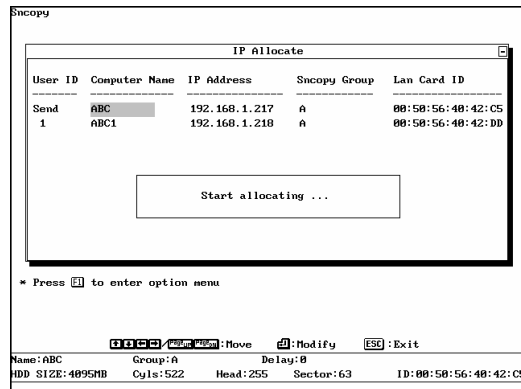


Figure 52

6.5.5 All computer Restart:

Restart the standby receiving computers along with the sending computer.

6.5.6 All computer Power off:

Power off the standby receiving computers along with the sending computers.

7. FDISK



You can find it in [Reborn Card Boot Menu]. Press **[F10]** [FDISK]. This feature is for repartitioning hard disk space without uninstalling Reborn Card. **Note:** All the data in the hard drive will be deleted permanently. Please think twice before using this function.

8. UPGRADE



1. Get to the Reborn Card boot Menu
2. Place new installation disk in floppy drive
3. Press **[F10]**>[Setup]>[Upgrade]
4. After it is finished, the system will reboot
5. Go into Windows in Supervisor mode
6. Place previous installation disk in floppy drive. Run A:\Install.exe to uninstall the previous setup in Windows.
7. The system will reboot
8. Go into Windows in Supervisor Mode again
9. Put new installation Disk in floppy drive. Run A:\Install.exe to install the new drivers into Windows
10. The system will reboot once more
11. Finished upgrading to the new version

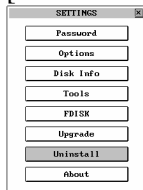
When you see “**Upgrade Completed, press any key to continue**”, that means you succeeded in upgrading.

If you see “Hardware Error”, or “Data Read Error, please check install diskette”, that means that you applied incorrect software for your Reborn Card. Please visit our web site for downloading correct software. [Http://www.lenten.com](http://www.lenten.com)

9. UNINSTALL

To uninstall Reborn Card functions from this computer.

- A. Place Reborn Installation disk in Floppy drive
- B. In Windows, click Start/Run and type A:\>Install.exe in supervisor mode
- C. Complete uninstall
- D. The system will reboot
- E. [Reborn Card Boot Menu]->[F10]->Uninstall



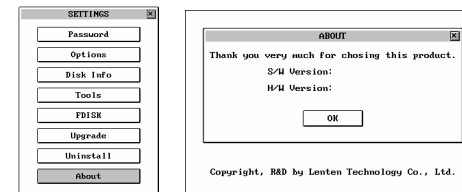
- F. Power off the system
- G. Remove Reborn Card
- H. Finished

Note:

After the uninstall is complete:

All data and partitions will be restored to their original state if you selected “Express Installation” when you first installed the Reborn Card. All data and partitions will be gone permanently if you selected “Custom Installation” when you first installed the Reborn Card.

10. ABOUT



Information about Reborn Card hardware and software versions can be obtained at <http://www.lenten.com>

11. FAQ(Frequency Asked Questions)

Q1. What if the Reborn Card is not active or bypassed by the computer?

A. Reboot your system and press **[Ctrl+H]** to go into the Reborn Card hardware settings and change modes right after seeing **<Lenten card hardware version: vx.x>**. The default Password is [Enter] key.

Hardware Mode: Normal, mode 1, 2, 3, 4, 5, 6, 7, 8
The default mode is Mode 8. Try other mode to make Reborn Card detected and active. Normal and mode 7 are the first recommended selection. When mode 7 is selected, please enter BIOS setup to "Lenten Card" as the first boot device.

Q2. How does Scandisk/Error-Checking and Disk Defragmenter help?

A. It gives better performance while running Windows operating systems.

12. PLUS SNCOPY & AutoIP Quick Install Guide

Please follow the steps to run SNCOPY and auto IP configuration. Install the card and create the multi-boot partition based on your need and install the OS.

Windows 2000
Windows XP
Windows 2003
Windows Vista

1. Select and enter the Operation System by Supervisor mode.
2. Setup [Network neighborhood] and [TCP/IP].
3. **Execute Install.exe from Reborn Install diskette. Reboot after finished.**
4. On sending PC, at Reborn main menu, press F10→ Tools→ SNCOPY Tools → SNCOPY Setup → enable [Auto Standby] option and input Computer name, Group name, IP Address and select correct packet driver → Save & Exit
5. Reboot at Reborn main menu, press F10 → Tools→ SNCOPY Tools → SNCOPY → press Sending. Meanwhile, power on the receiving PCs. If the receiving PC is the first time installation, select [SNCOPY] or press F1 to install via Network (WOL Cards only) → Receiving PC will auto connect and login to the sending computer.
6. On sending PC, make sure all the receiving PCs have logged in. Press F1 to finish login → Press F1 to send data → select [Parameter data and all partition]. After complete sending data to receiving computers, system will step back to login menu. Please press F2 to [Send command] → select [Collect ID for Wake up on LAN] → IP Allocate → Press F1 and select [Auto Allocate] → Computer Name & IP & Group → Done
7. Complete the installation of all receiving machine.
8. All the receiving computers will auto configure the IP and Computer Name at their first reboot.

